



JUKI Feeder Calibration Jig with High Precision Design 1-7 Days Lead Time and 1 PCS MOQ for SMT Assembly

Our Product Introduction

for more products please visit us on smtmachine-spareparts.com

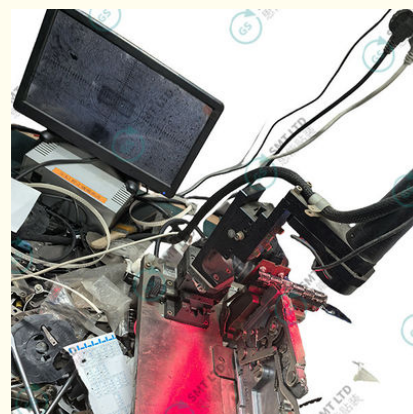
Basic Information

- Place of Origin: Japan
- Brand Name: JUKI
- Minimum Order Quantity: 1 PCS
- Price: USD+negotiable+pcs
- Packaging Details: 600*900*700mm
- Delivery Time: 1-7 days
- Payment Terms: T/T
- Supply Ability: 1+pcs+per days

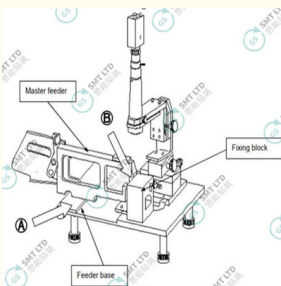


Product Specification

- Brand Name: JUKI
- Condition: Original New/Used Original
- Lead Time: 1-7 Days
- MOQ: 1 PCS
- Highlight: Juki Feeder Calibration Jig, Precision Feeder Calibration Jig



More Images



Product Description

Juki Precision Feeder Calibration Jig Surface Mount Technology

SMT JUKI Feeder Calibration Jig: Essential Equipment for Accurate SMT Assembly

In surface mount technology (SMT) manufacturing, every detail matters. From precision placement of components to ensuring a smooth feeding process, maintaining accuracy is crucial for high-quality electronic assembly. The **SMT JUKI Feeder Calibration Jig** is a specialized tool designed to optimize feeder performance, ensuring seamless operation and minimizing defects in SMT processes.

What is an SMT JUKI Feeder Calibration Jig?

The SMT JUKI Feeder Calibration Jig is a precision instrument used to calibrate and test the feeders of JUKI SMT machines. Feeders play a critical role in delivering components from reels or trays to the pick-and-place machine. Misaligned feeders can lead to component placement errors, production delays, and increased waste.

The calibration jig ensures that feeders are properly adjusted and aligned to meet the exacting standards of SMT production, thereby enhancing efficiency and reducing downtime.

Features of the SMT JUKI Feeder Calibration Jig

High Precision Design: The jig is engineered to provide exact measurements, enabling accurate calibration of feeders to their optimal settings.

Compatibility with JUKI Feeders: Designed specifically for JUKI SMT machines, the calibration jig supports a wide range of JUKI feeder models, including electric and mechanical types.

User-Friendly Interface: Equipped with intuitive controls and clear indicators, the jig simplifies the calibration process, even for less experienced operators.

Durable Construction: Made from high-quality materials, the jig is built to withstand the rigors of a busy manufacturing environment, ensuring long-term reliability.

Portable Design: Many calibration jigs are lightweight and portable, making it easy to move them across different production lines.

Importance of Feeder Calibration in SMT Processes

Feeder calibration is a vital step in SMT manufacturing. Accurate calibration ensures that:

Components are delivered precisely to the pick-and-place machine, minimizing misplacements

Production lines operate smoothly without frequent stoppages

Waste is minimized by preventing damaged components or excessive material usage

High-quality PCBs are produced through reliable component placement

Benefits of Using an SMT JUKI Feeder Calibration Jig

Improved feeder performance and reduced errors

Increased production efficiency at higher speeds

Cost savings through reduced material waste and downtime

Enhanced product quality through precise component placement

Prolonged feeder lifespan through regular maintenance

How to Use the SMT JUKI Feeder Calibration Jig

Prepare the feeder by removing it from the SMT machine and cleaning thoroughly

Set up the calibration jig on a stable surface

Mount the feeder onto the jig, ensuring proper alignment

Perform calibration using the jig's controls

Verify results through testing

Reinstall the feeder on the SMT machine and conduct final tests

Maintenance Tips for the SMT JUKI Feeder Calibration Jig

Clean regularly to remove dust and residue

Inspect for wear and tear, addressing issues promptly

Store in a clean, dry environment

Periodically verify the jig's accuracy against known standards

Why Invest in an SMT JUKI Feeder Calibration Jig?

For manufacturers using JUKI SMT machines, a calibration jig is an essential investment. It ensures feeder accuracy while enhancing overall production quality and efficiency. By minimizing errors and downtime, the jig pays for itself through reduced costs and improved output.

The **SMT JUKI Feeder Calibration Jig** is a must-have tool for any SMT manufacturer aiming for precision, efficiency, and quality. Its role in ensuring accurate feeder performance directly impacts the success of the entire assembly process, making it an invaluable asset in modern electronics manufacturing.


Global Soul Limited

sales@gs-smt.com



juki SMT Feeder Calibration Jig | GSSMT, JUKI feeder calibration jig, SMT JUKI calibration tool, JUKI feeder adjustment jig, SMT feeder calibration equipment, JUKI SMT feeder jig, SMT feeder alignment tool, Best JUKI calibration jig, JUKI SMT feeder tester, SMT JUKI feeder alignment jig, Feeder calibration jig for JUKI, JUKI calibration jig for SMT feeders, Precision SMT JUKI calibration jig, SMT feeder testing equipment, JUKI electronic feeder jig, SMT machine feeder calibration tool, JUKI feeder calibration machine, Accurate JUKI feeder jig, JUKI feeder calibration process tool, SMT JUKI feeder adjustment tool, High-quality JUKI calibration jig

 **Global Soul Limited**

 +8613728696610

 liyi@gs-smt.com

 smtmachine-spareparts.com

Room F3B-016, B Block, Hao Yun Lai Bussiness Building, Liutang road , Bao'an District , Shenzhen, China