



25KW Electric Steel Mesh Cleaning Machine for SMT 750x750mm

Our Product Introduction

for more products please visit us on smtmachine-spareparts.com

Basic Information

- Place of Origin: China
- Brand Name: GS
- Model Number: RL-8100
- Minimum Order Quantity: 1 PCS
- Price: USD+negotiable+pcs
- Packaging Details: 1400*1350*2000mm
- Delivery Time: 1-7 days
- Payment Terms: T/T
- Supply Ability: 1+pcs+per days



Product Specification

- Applicable Steel Mesh Size: L750 × W750 × H40(mm) [large Size Needs To Be Customized]
- Equipment Dimensions: L1220*W1120*H1850 (mm)
- Maximum Volume Of Liquid 50L*2PCS Tank:
- Optimal Liquid Usage: 40L*2PCS
- Cleaning, Rinsing, Drying Method: Left And Right Mobile High Pressure Spray Cleaning + High Pressure Hot Air Cutting (optional Super Model)
- Cleaning Solution Isolation Time: 40 To 60S
- Cleaning Time: 2-5min
- Drying Time: 2-5min
- Filtration System (Level 1): Level 1 Filter Element Filtration: (Filter Impurities And Labels)
- Filtration System (secondary): Secondary Filter Filter: (filter Solder Paste And Rosin Particles)



Product Description

Electric Steel Mesh Cleaning Machine 25KW

Machine Characteristics

- High pressure spray system designed for water-based cleaning of screen boards, misprint boards, and printing machine scrapers
- Dual liquid tank system with heating capability for complete cleaning, rinsing, and hot air drying
- Comprehensive process flow: cleaning → chemical isolation → rough rinsing (open/closed loop) → fine rinsing (open/closed loop) → drying
- Advanced touch screen interface with program file saving for simplified operation
- System counting function tracks cleaning cycles and filtration counts automatically
- Real-time monitoring of liquid and pump pressure via panel pressure gauges
- Pressure sensor monitoring with alarm system for out-of-range conditions
- Liquid direct reflux system minimizes consumption
- Full stainless steel construction resistant to acidic and alkaline cleaning solutions
- High-efficiency drying system combining high pressure fan with hot air for thorough results
- Economical operation using only 30-120ml liquid per cleaning cycle
- Compressed air recovery system reduces liquid consumption by 50%

Global Soul Limited

sales@gs-smt.com



Electric steel mesh cleaning machine

Function Introduction

● Touch screen operation interface

Adopt stable and reliable imported brand color touch screen, aiming at: solvent temperature, cleaning time, rinsing frequency/time, rinsing temperature, drying time, drying temperature parameters, etc.



Electric steel mesh cleaning machine

Function introduction

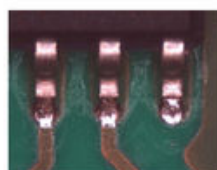
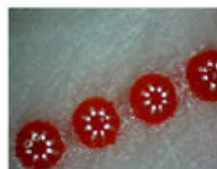
● Visual sealing design, can observe the whole cleaning process.



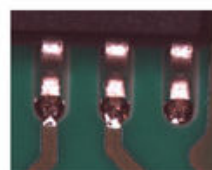
Electric steel mesh cleaning machine

Comparison of cleaning effect

Before cleaning



After cleaning



Electric steel mesh cleaning machine | GSSMT, SMT steel mesh cleaning machine, Electric cleaning equipment for steel mesh, Automated steel mesh cleaner, Industrial mesh cleaning machine, Pneumatic steel mesh cleaning system, PCB steel mesh cleaning equipment, High-efficiency mesh cleaning machine, Electric mesh cleaning solutions, SMT cleaning equipment, Steel mesh washer for electronics, Automatic mesh cleaning machine, Eco-friendly steel mesh cleaner, Cleaning machines for PCB stencils, Compressed air steel mesh cleaner, Dual-sided steel mesh cleaning machine, Electric swab cleaning machine, Professional steel mesh cleaning system, High-capacity electric cleaner for meshes, Mesh board cleaning technology, Custom electric steel mesh cleaners



Global Soul Limited



+8613728696610



liyi@gs-smt.com



smtmachine-spareparts.com

Room F3B-016, B Block, Hao Yun Lai Bussiness Building, Liutang road , Bao'an District , Shenzhen, China