



Full Pneumatic Steel Mesh Cleaning Machine 400 - 600L/Min Air consumption

Our Product Introduction

for more products please visit us on smtmachine-spareparts.com

Basic Information

- Place of Origin: China
- Brand Name: GS
- Model Number: RL-750
- Minimum Order Quantity: 1 PCS
- Price: USD+negotiable+pcs
- Packaging Details: 1200*800*2000mm
- Delivery Time: 1-7 days
- Payment Terms: T/T
- Supply Ability: 1+pcs+per days



Product Specification

- Applicable Steel Mesh Size: L750 × W750 × H40(mm) [large Size Needs To Be Customized]
- Dimensions: L1000*W700*H1730 (mm)
- Liquid Tank Maximum Capacity: 40 Liters
- Optimal Liquid Usage: 30 Liters
- Cleaning Method: 360° Rotary Double-side Isobaric Jet High Pressure Jet (cleaning + Blow Drying)
- Cleaning Time: 2-5min
- Drying Time: 2-5min
- External Air Source: 0.4 ~ 0.6 (Mpa)
- Air Consumption: 400 ~ 600(L/Min)
- Exhaust Port Size: Φ125×H25(mm)
- Filter System (primary) + Primary Filter Element Filtration: Filter Impurities And Labels
- Filtration System: Filter Solder Paste And Resin Particles



Product Description

Product features:

All stainless steel body: beautiful, wear resistance, corrosion resistance, in line with environmental requirements and standards;
 Full pneumatic operation, no electricity, no fire and other safety hazards;
 Side wall air intake blow-drying design;
 Humanized design: one-button operation and automatic filling and draining function, the operation is very simple;
 Replaceable modular controller and quick-plug design, maintenance is also very simple and convenient;
 Two-stage filtration system, low exhaust and S-shaped exhaust pipe design: solvent recycling, low liquid consumption;
 High density isobaric double-sided rotary cleaning nozzle, strong cleaning force, does not destroy the tension of steel mesh.
 Systematic integration of global quality control devices to ensure excellent quality, stable performance and long service life;

Global Soul Limited

sales@gs-smt.com

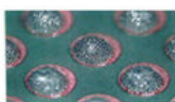


Full pneumatic steel mesh cleaning machine

Comparison of cleaning cases



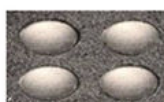
Printing steel mesh is not cleaned



Poor printing



Dual-side rotating nozzle



After cleaning



Good printing effect



Stencil tension measurement before and after cleaning

Full pneumatic steel mesh cleaning machine

Care and maintenance

- Automatic filling and draining
- Controller maintenance
Replaceable modular controller and quick-plug design,
Maintenance is simple and convenient



According to the corresponding number
Replace trachea and proceed

Full pneumatic steel mesh cleaning machine | GSSMT, Pneumatic mesh cleaning machine, Automatic steel mesh cleaner, Full pneumatic stencil cleaning, Compressed air cleaning equipment, SMT mesh cleaning solutions, Industrial pneumatic cleaning machine, Pneumatic cleaning system for electronics, High-pressure mesh cleaning equipment, Eco-friendly pneumatic cleaners Rotary atomizing spray cleaning machine, Pneumatic stencil washer, Steel mesh drying machine, PCB stencil cleaning equipment, Non-electric mesh cleaning system, Dual-stage filtration cleaning machine, Heavy-duty pneumatic cleaners, Pneumatic cleaning for solder paste removal, Customizable pneumatic mesh cleaners, Efficient air-operated cleaning machines, Pneumatic equipment for industrial cleaning



Global Soul Limited

+8613728696610

liyi@gs-smt.com

smtmachine-spareparts.com

Room F3B-016, B Block, Hao Yun Lai Bussiness Building, Liutang road , Bao'an District , Shenzhen, China