



High Speed SMT Dispenser 720000 Dots/h with 40µm Accuracy

Basic Information

- Place of Origin: Switzerland
- Brand Name: Essentec
- Model Number: FOX
- Minimum Order Quantity: 1 PCS
- Price: USD+negotiable+pcs
- Packaging Details: 1000*1200*2000mm
- Delivery Time: 1-7 days
- Payment Terms: T/T
- Supply Ability: 1+pcs+per days



Product Specification

- Process Maximum Dispensing Speed Piezo Jet Valve: > 720'000 Dots/h
- Dynamic Shockwave Valve: 720'000 Dots/h
- Time/Pressure Valve: 28'000 Dots/h
- Archimedean Screw Valve: 24'000 Dots/h
- Dispensing Mode: Dot, Line, Curve, Interpolated 3D Contour
- Accuracy Placement XY Dots: 40 µm (3σ)
- Accuracy Positioning Z Axis: 20 µm (3σ)
- PCB Dimensions: 50 X 50 Mm Bis Zu 406 X 305 Mm (2 X 2" Up To 16 X 12")
- Dimensions Machine Footprint: 880 X 1090 Mm (34.7 X 43")
- Condition: Original New/Used Origanl
- Highlight: **high speed smt pick and place machines ,**



More Images



Our Product Introduction

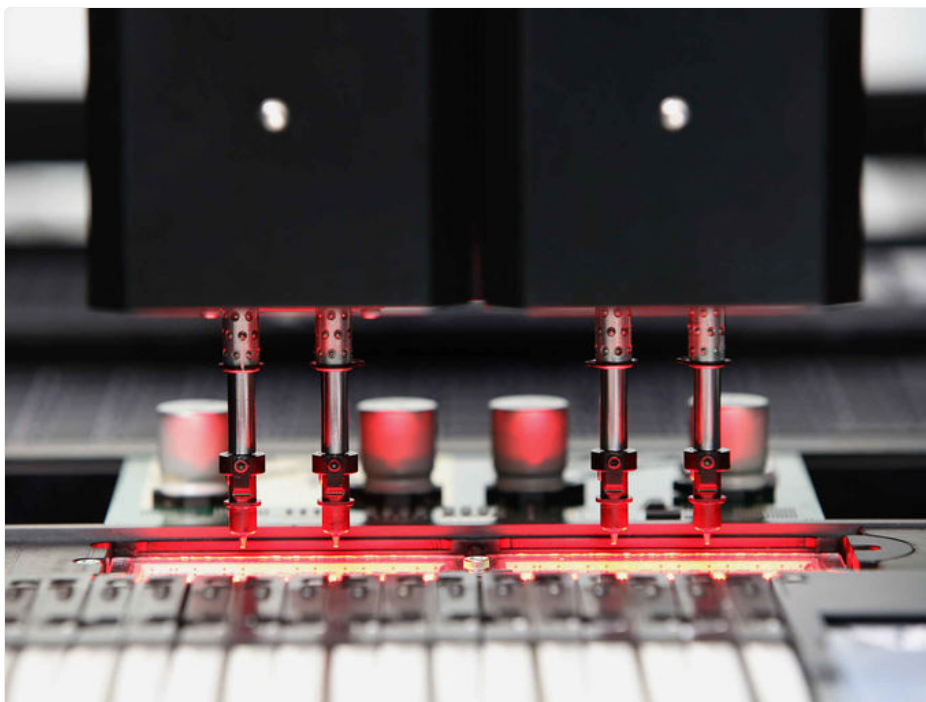
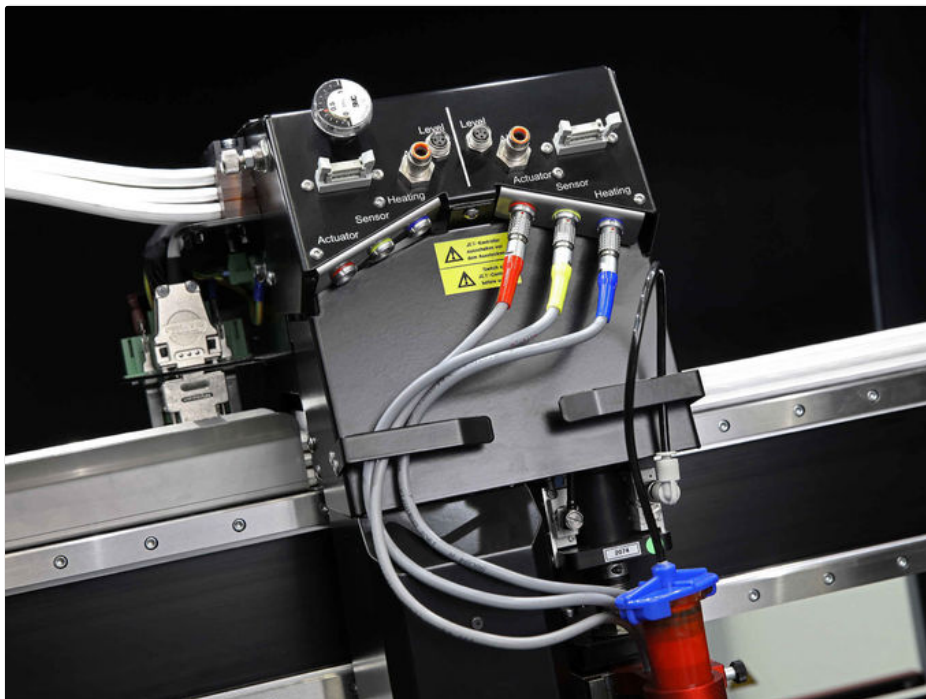
for more products please visit us on smtmachine-spareparts.com

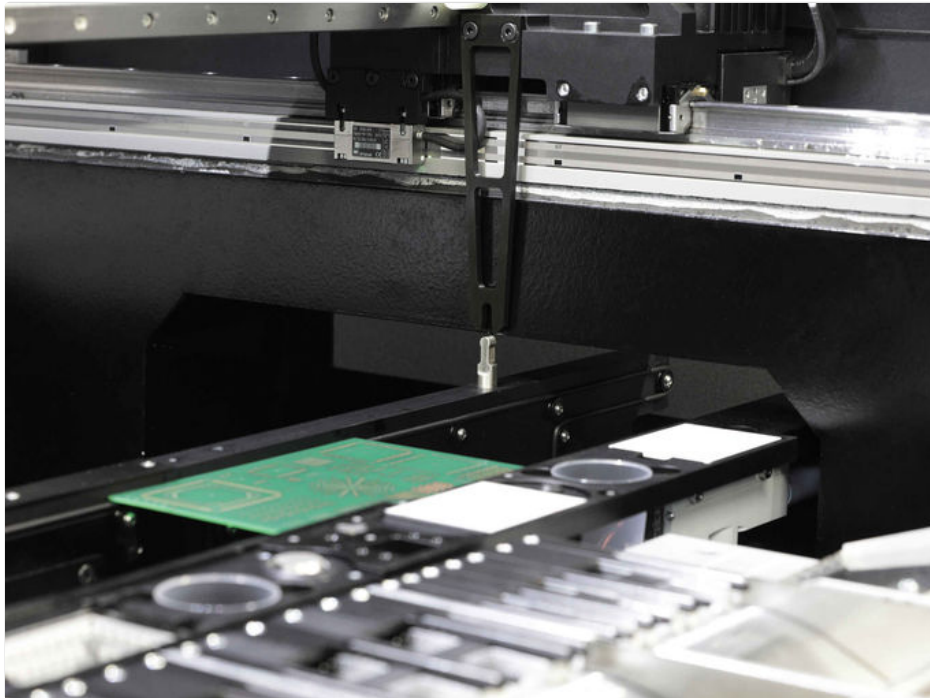
Product Description

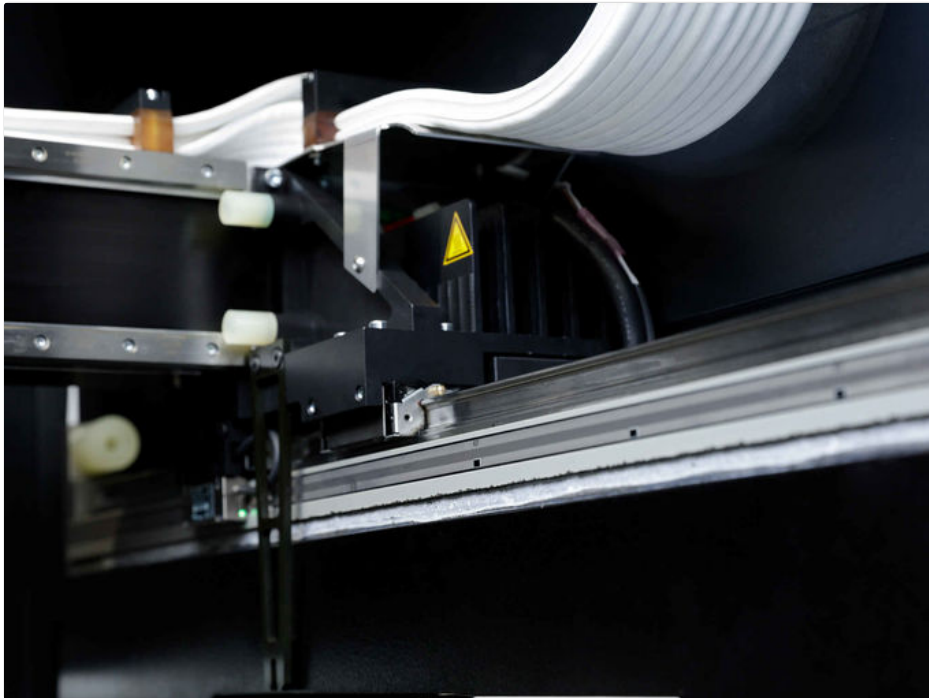
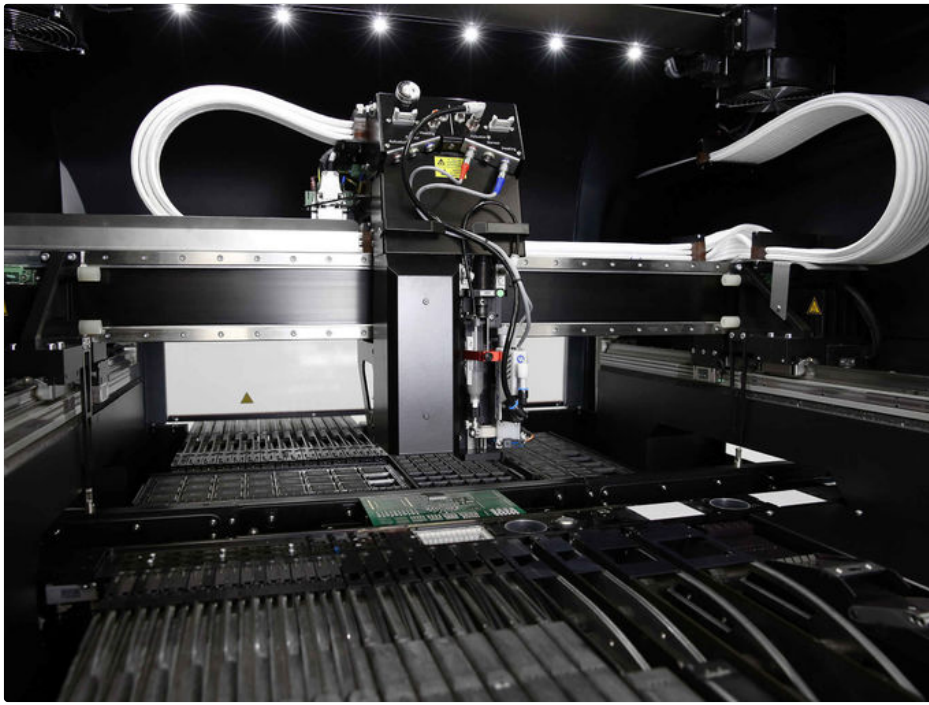
SMART-SIZED HIGH SPEED DISPENSER


Introducing Fox Technology - an advanced solution for all types of components and devices. This high-speed dispenser features expandable configuration in any direction, capable of driving up to 200 feeders, making it ideal for high-mix production environments.

With its compact footprint and optimized weight, the machine is perfectly suited for space-constrained production areas, including facilities located on upper floors.







 **Global Soul Limited**

 +8613728696610

 liyi@gs-smt.com

 smtmachine-spareparts.com

Room F3B-016, B Block, Hao Yun Lai Bussiness Building, Liutang road , Bao'an District , Shenzhen, China