



## 1.6 Thick SMT PCB with Surface Mount Technology and Sinking Gold for Rail Transit Applications

Our Product Introduction

### Basic Information

- Place of Origin: China
- Brand Name: GS
- Model Number: GS10GDJT
- Minimum Order Quantity: 1 PCS
- Price: USD+negotiable+pcs
- Packaging Details: 20\*20\*10cm
- Delivery Time: 5-15 days
- Payment Terms: T/T
- Supply Ability: 1+roll+per days



### Product Specification

- Highlight: Surface Mount Technology SMT PCBs, 10 Floors SMT PCBs, Rail Transit SMT PCBs

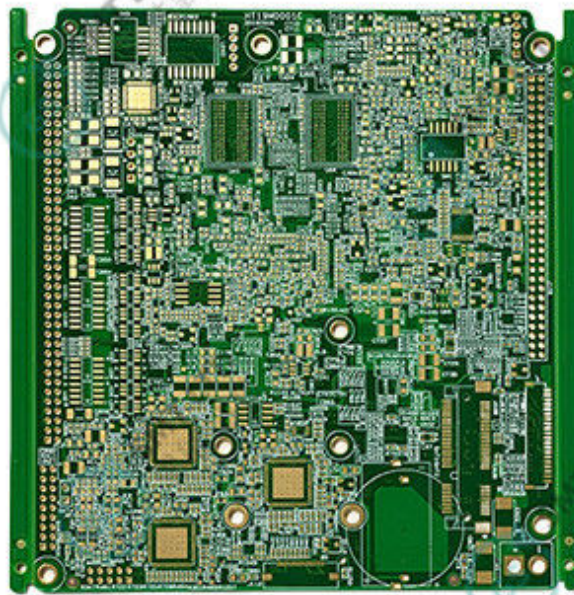
for more products please visit us on [smtmachine-spapart.com](http://smtmachine-spapart.com)

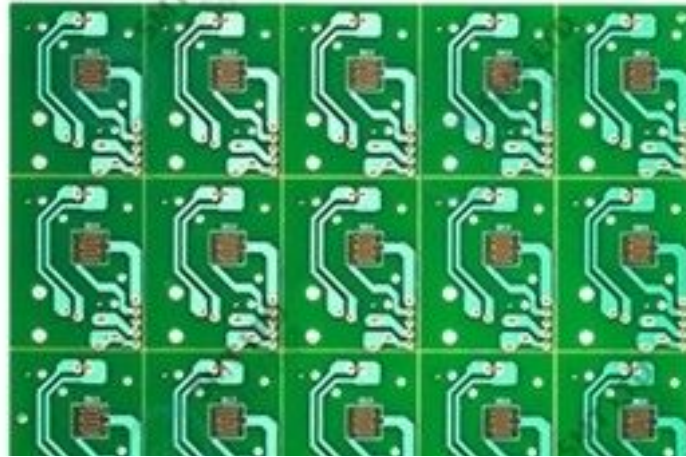
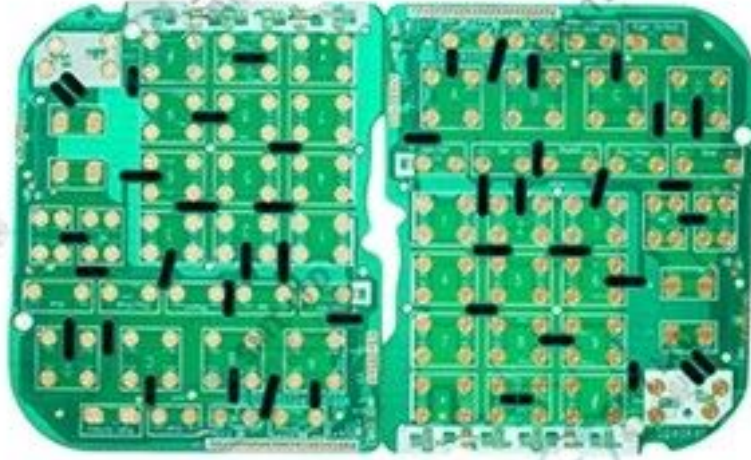
## 10-Layer PCB Manufacturing for Rail Transit Applications

### High-Quality SMT PCBs for Demanding Environments

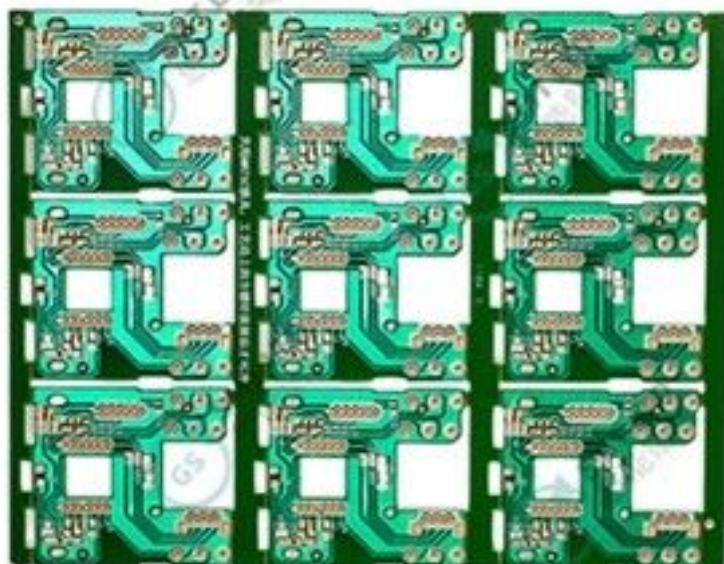
Our 10-layer PCB manufacturing solution is specifically engineered for rail transit applications, featuring advanced surface mount technology (SMT) for reliable performance in demanding environments.

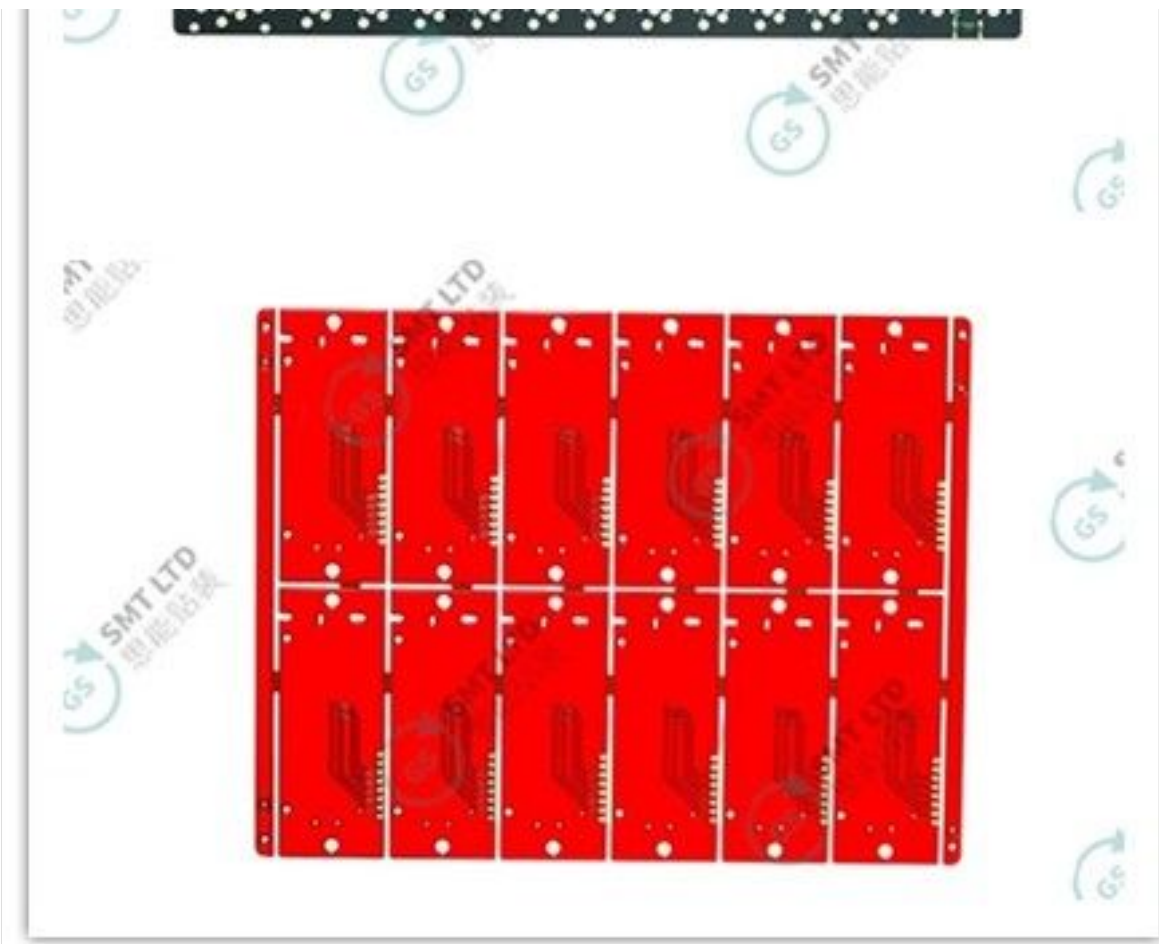
**Global Soul Limited** [sales@gs-smt.com](mailto:sales@gs-smt.com)













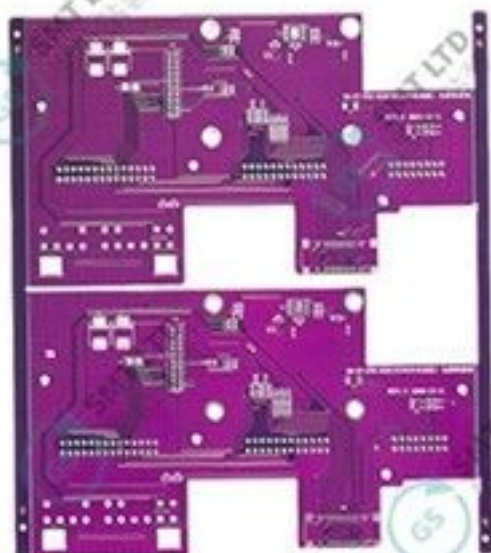
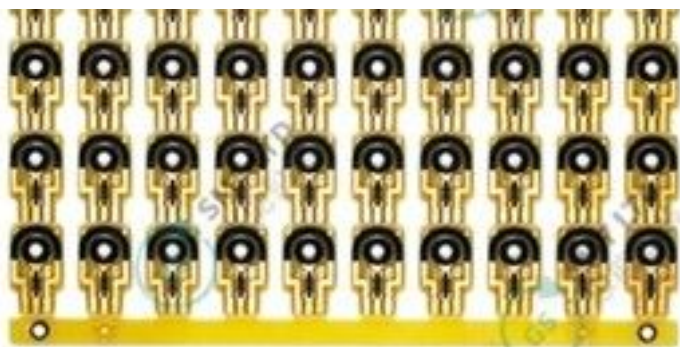














Key Specifications

Parameter	Specification
-----------	---------------



Layer Count	10 layers
Board Thickness	1.6mm
Surface Finish	Immersion Gold (ENIG)
Impedance Control	Yes
Base Material	Shengyi TG170

Application Features

- Designed specifically for rail transit systems and infrastructure
- High-reliability construction for vibration and shock resistance
- Optimized for surface mount technology (SMT) assembly
- Precision impedance control for signal integrity
- Durable immersion gold surface finish for excellent solderability

Multilayer PCB   PCB fabrication   HDI PCB   PCB assembly   Flexible circuit boards   Rigid-flex PCBs   PCB prototyping   PCB design   Printed circuit board   PCB etching   Solder mask   Copper plating   PCB layer stackup   Via technology   Prototype PCB   PCB testing   SMT PCBs   Thermal management   PCB materials   Rapid PCB



+8613728696610   liyi@gs-smt.com   smtmachine-spareparts.com

Room F3B-016, B Block, Hao Yun Lai Bussiness Building, Liutang road , Bao'an District , Shenzhen, China