

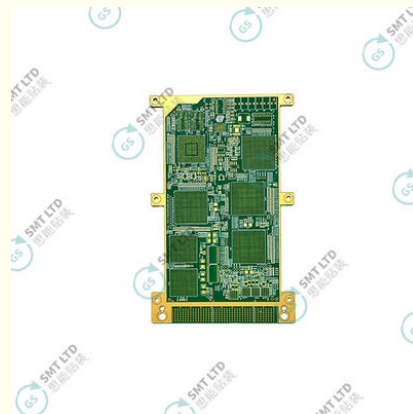


12-Layer PCB Test Board with 1.6 Thick, 6.5mil Hole to Line Spacing, and 3mil Wiring for Precision Manufacturing

Our Product Introduction

Basic Information

- Place of Origin: China
- Brand Name: GS
- Model Number: GS12CCSB
- Minimum Order Quantity: 1 PCS
- Price: USD+negotiable+pcs
- Packaging Details: 20*20*10cm
- Delivery Time: 5-15 days
- Payment Terms: T/T
- Supply Ability: 1+pcs+per days



Product Specification

- Highlight: **Manufacturing PCB Test Boards,
12 Layer PCB Test Boards**

for more products please visit us on smtmachine-spareparts.com

Product Description

12-Layer PCB Test Boards - The Ultimate Solution for Manufacturing

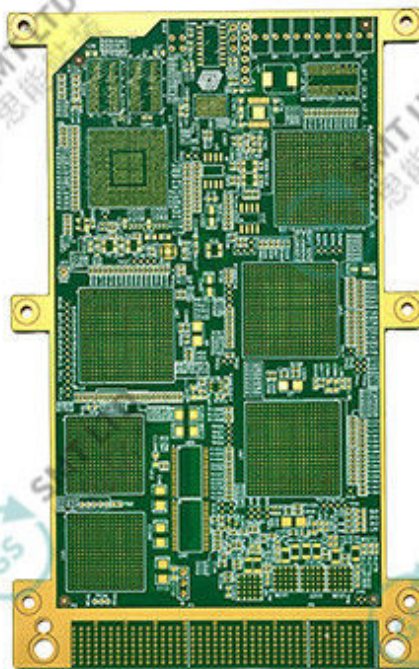
Premium 12-Layer PCB Test Boards

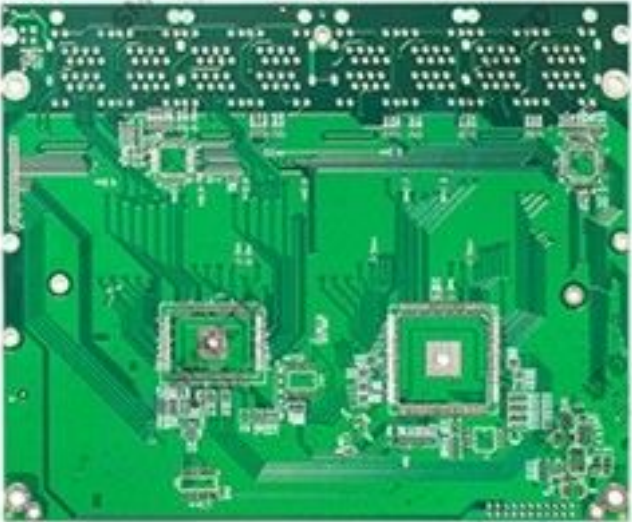
High-quality 12-layer PCB test boards designed for rigorous manufacturing testing and validation processes.

- 1.6mm board thickness for enhanced durability
- Gold settling for superior conductivity
- Impedance control for signal integrity
- Shengyi TG170 high-performance material
- 6.5mil hole to line spacing (inner layers)
- 3mil wiring capability (local areas)

Product Images

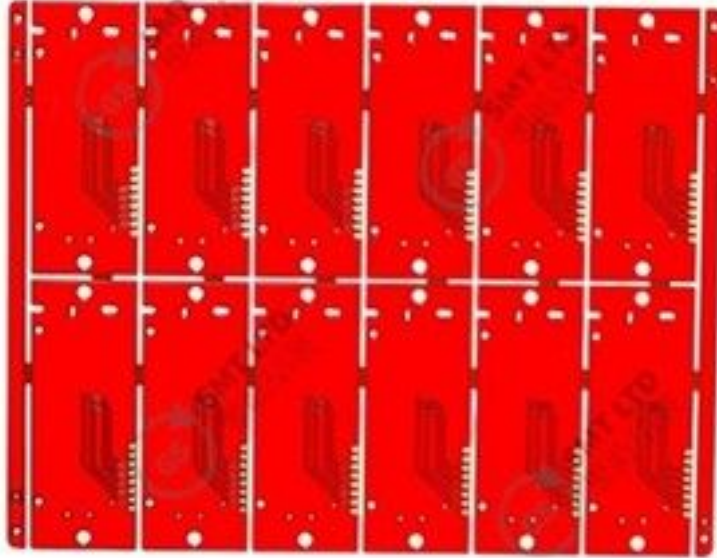
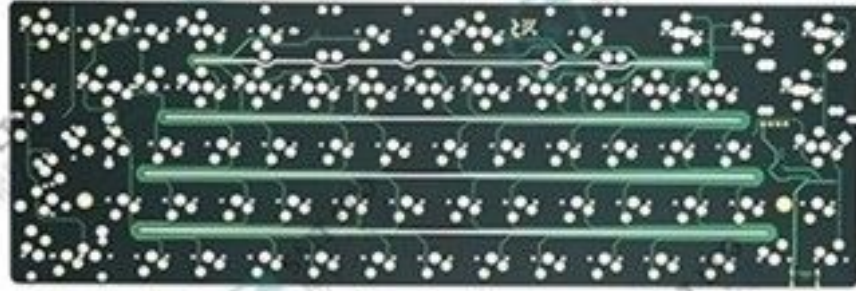
Global Soul Limited sales@gs-smt.com

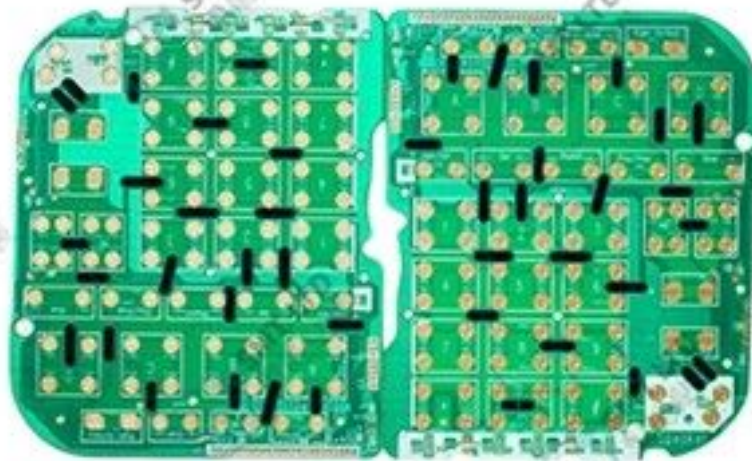








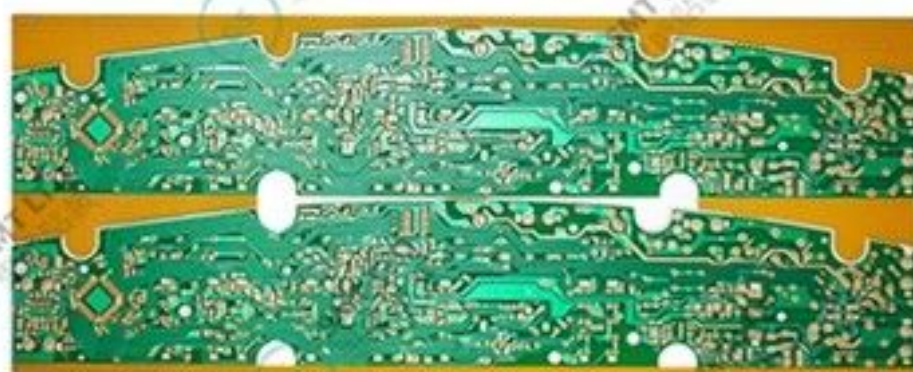




SMT LTD
思能貼裝



M1
思能貼



SMT LTD
思能貼裝

SMT LTD
思能貼裝



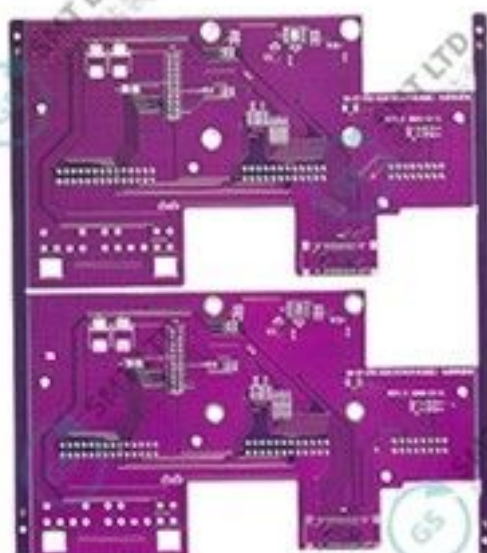
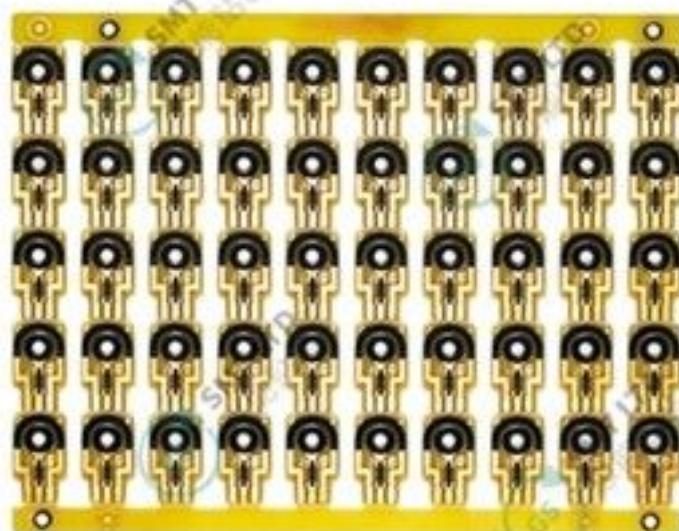
M7
思能貼

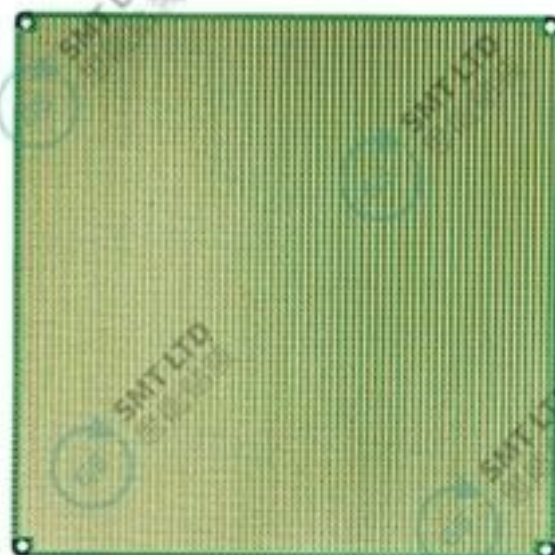


SMT LTD
思能貼裝

SMT LTD
思能貼裝







Related PCB Technologies

GSSMT Multilayer PCB PCB fabrication process HDI PCB (High-Density Interconnect) PCB assembly services Flexible circuit boards
Rigid-flex PCBs PCB prototyping PCB design software Printed circuit board manufacturing PCB etching techniques Solder mask application
Copper plating in PCBs PCB layer stackup Via technology in PCBs Prototype PCB manufacturing PCB testing methods
Surface mount technology (SMT) PCBs Thermal management in PCBs PCB material types (FR-4, Rogers) Rapid PCB manufacturing



Global Soul Limited



+8613728696610



liyi@gs-smt.com



smtmachine-spareparts.com

Room F3B-016, B Block, Hao Yun Lai Bussiness Building, Liutang road , Bao'an District , Shenzhen, China