



Siemens D1i SMT Pick and Place Machine 20,000cph 6 Nozzle Head

Our Product Introduction

for more products please visit us on smtmachine-spareparts.com

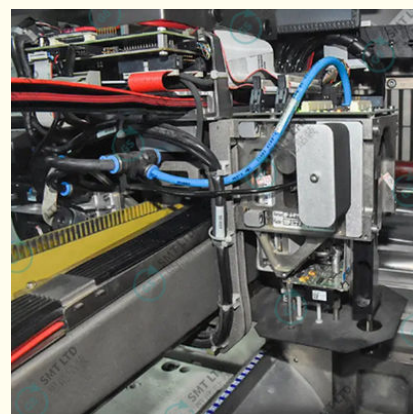
Basic Information

- Place of Origin: Germany
- Brand Name: ASM/SIEMENS
- Model Number: D1i
- Minimum Order Quantity: 1 PCS
- Price: USD+negotiable+pcs
- Packaging Details: 2100*2800*1800mm
- Delivery Time: 1-7 days
- Payment Terms: T/T
- Supply Ability: 1+pcs+per days

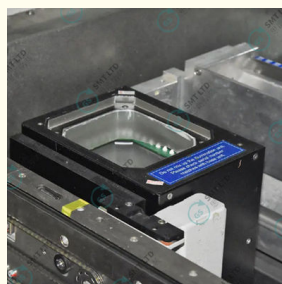
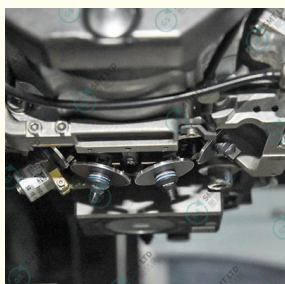


Product Specification

- Number Of Arms: 1
- Number Of Placement Heads: 2 Or 1
- IPC Speed: 13.000cph
- SIPLACE Benchmark Evaluation: 15.000cph
- Theoretical Speed: 20.000cph
- Component Range (mm²): 01005 To 200x125
- Placement Head Features: 6 Nozzle Collect & Placehead
- Mounting Accuracy: $\pm 52,5\mu\text{m}/3\sigma$
- Angular Accuracy: $\pm 0,225\mu\text{m}/3\sigma$
- Conveyor Belt Type: SIPLACE Single Track, Flexible Double Track
- Conveyor Mode: Asynchronous, Synchronous
- PCB Size: 50x50mm² 610x508mm²
- PCB Thickness: 0,3 4,5mm² (other Sizes Can Be Customized)



More Images



Product Description

SMT Siemens D1i Pick and Place Machine

Revolutionizing SMT Assembly: The Siemens D1i Precision Pick and Place Machine

The Siemens D1i Precision Pick and Place Machine is a game-changer in surface mount technology (SMT). With its innovative design and advanced capabilities, it enhances productivity and precision in electronics manufacturing while setting new industry standards.

Introduction to Siemens D1i Machine

The Siemens D1i is a high-precision SMT pick-and-place machine designed for modern production lines. Its advanced features enable exceptional speed and accuracy when handling a wide range of components, making it suitable for both small-scale PCB assembly and large-scale industrial applications.

Key Features of Siemens D1i Precision Pick and Place Machine

- High-Speed Component Placement:** Theoretical speed up to 20,000 components per hour (cph) with 13,000 cph under IPC standards
- Superior Accuracy:** Placement accuracy of $\pm 52.5\mu\text{m}/3\sigma$ with angular accuracy of $\pm 0.225\mu\text{m}/3\sigma$
- Wide Component Range:** Handles components from 01005 to 200x125 mm²
- Flexible PCB Handling:** Supports PCB sizes from 50x50 mm² to 610x508 mm² (0.3-4.5 mm thickness, up to 3 kg weight)
- Advanced Placement Heads:** Six-nozzle Collect&Place heads for efficient multi-component handling
- Digital Imaging System:** Integrated system for real-time quality control
- Feeder Capacity:** Supports up to 90 feeders with SIPLACE Waffle Tray and Feeding Cart options

Benefits of Using Siemens D1i Machine

- Enhanced Productivity:** Reduces cycle times while maintaining high precision
- Cost Efficiency:** Minimizes errors and rework for significant production savings
- Flexibility:** Suitable for both small-batch and large-scale production
- User-Friendly Operation:** Intuitive interface with powerful SIPLACE software reduces training time

Applications of Siemens D1i Precision Pick and Place Machine

- Electronics Manufacturing:** Smartphones, tablets, and wearable devices
- Automotive Industry:** Sensors, control units, and infotainment systems
- Telecommunications:** Routers, modems, and base stations

Frequently Asked Questions (FAQs)

What is the theoretical speed of the Siemens D1i Machine?

The theoretical speed is up to 20,000 components per hour (cph).

What types of PCBs can the D1i handle?

It supports PCB sizes ranging from 50x50 mm² to 610x508 mm² with thicknesses between 0.3 mm and 4.5 mm.

How accurate is the component placement?

Placement accuracy is $\pm 52.5\mu\text{m}/3\sigma$ with angular accuracy at $\pm 0.225\mu\text{m}/3\sigma$.

Can the D1i handle small components like 01005?

Yes, it can handle components as small as 01005 up to larger sizes like 200x125 mm².

What industries benefit most from using the Siemens D1i?

The machine is widely used in electronics manufacturing, automotive industry, and telecommunications.

