



## Customizable 1 Channel Thoroughfare Dimm Feeder GS-JBT2101 Controlled by Siemens PLC

### Our Product Introduction

for more products please visit us on [smtmachine-spareparts.com](http://smtmachine-spareparts.com)

#### Basic Information

- Place of Origin: China
- Brand Name: GS
- Model Number: GS-JBT2101
- Minimum Order Quantity: 1
- Price: USD+negotiable+pcs
- Packaging Details: 1000\*1500\*1600
- Delivery Time: 1-7 days
- Payment Terms: T/T
- Supply Ability: 1+pcs+per days



#### Product Specification

- Model: GS-JBT2101
- Dimensions (length \* Width \* Height Company Mm): Please Refer To The Following Drawings
- Weight: 220KG
- Working Voltage: AC 220V
- Air Source Requirements: 0.5-0.7Mpa
- Maximum Power: 900W
- Feeding Speed: 2.5s/Pcs
- Operation Panel: Siemens Operation Screen
- Control: Siemens PLC
- Thoroughfare: 1 Channels( The Position Can Be Customized In The Left And Right Directions)
- Adapt To The Material Tray: Please Refer To The Following Drawings
- Material: Compatible With PTH And SMT Materials
- Highlight: **Thoroughfare Dimm Feeder GS-JBT2101 , Dimm Feeder GS-JBT2101 ,**

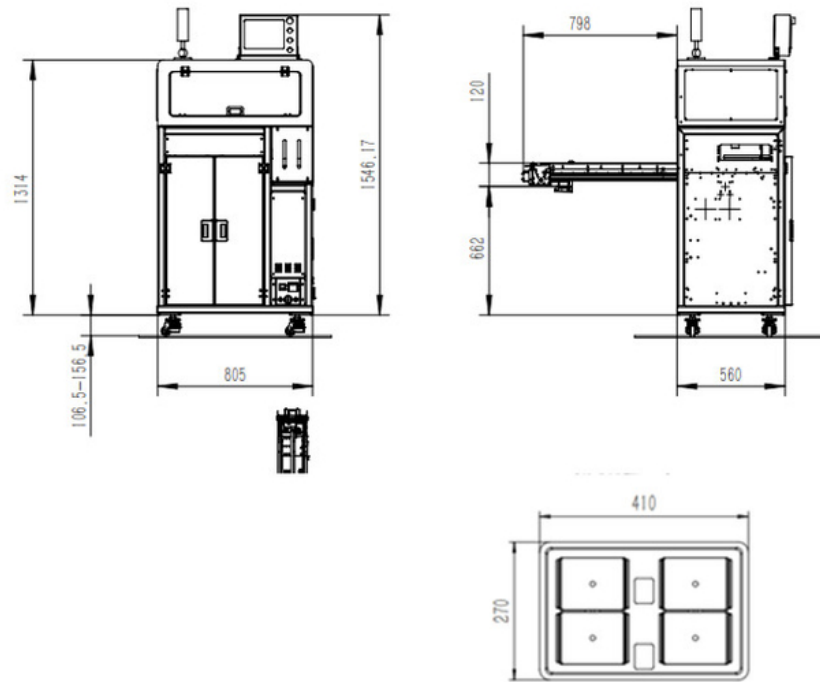


## Product Description

### GS-JBT2101(Monorail)

A DIMM feeder is a component supply device that neatly arranges multiple stacked disk DIMM slots and sends them out one by one at a specified time to supply the insertion machine.





The size of the pallet exceeds the range, and the external dimensions of the equipment need to be increased.

If there are special material dimensions, you can contact our company for a solution and customize a dedicated feeder.